

The Center for Disease Control reports that African-American women are significantly more likely to die of breast cancer than other women. At St. Andrew, we didn't just ask why. We enlisted the greatest minds.

And then, ... *We did something about it.*<sup>SM</sup>



## WELLNESS SUITE<sup>®</sup>

A Modular, Multilingual, Interactive Community of Health Education Touchscreen Kiosk and Web Programs Making People's Lives Healthier and Better.

presented by  
**ST. ANDREW DEVELOPMENT, INC.**  
[www.StAndrew.com](http://www.StAndrew.com)

### PROGRAM ID & DESCRIPTION

## SISTERS P.R.A.I.S.E.<sup>®</sup>

An interactive health education touch screen kiosk and web based program promoting preventive breast health practices among African-American women.

### PROGRAM MISSION

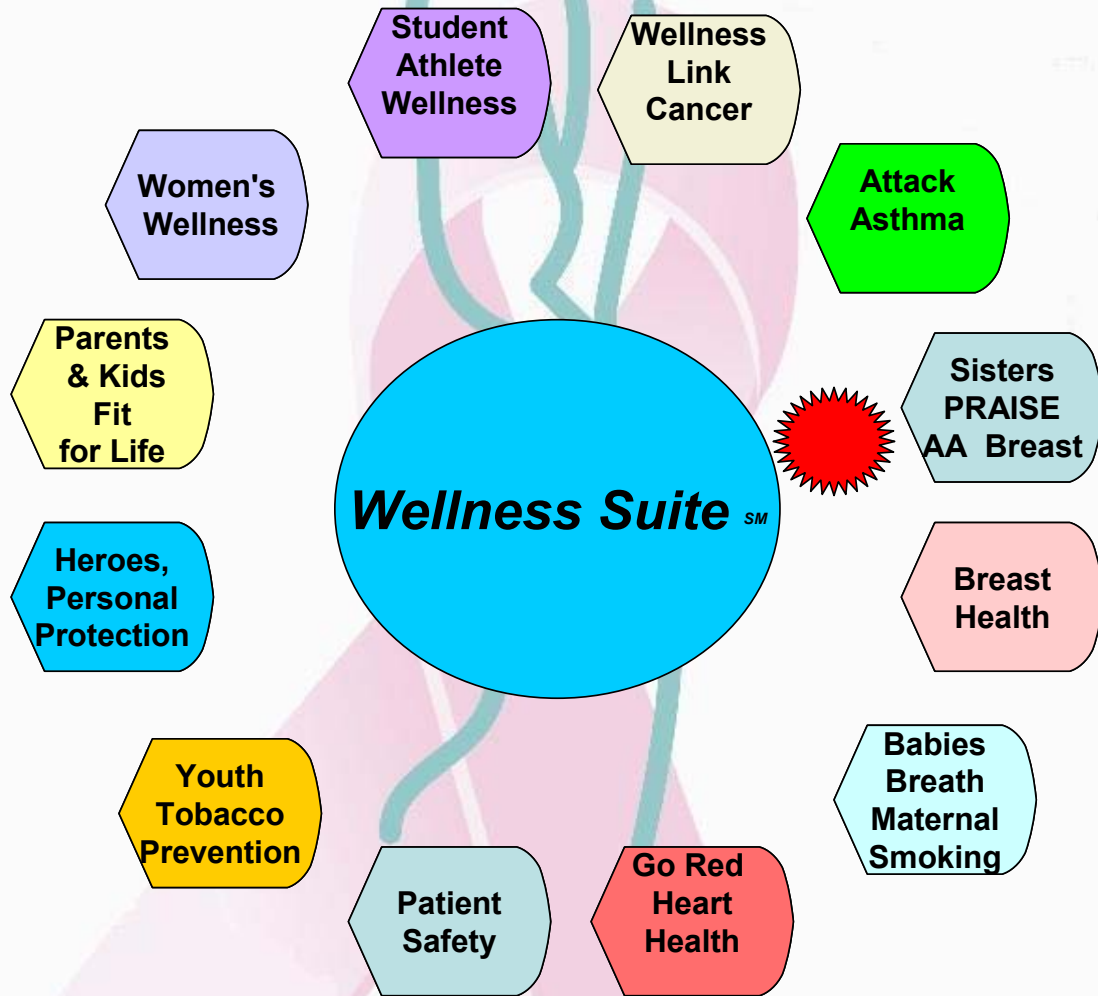
Empower African-American women through education with the life-skills to take control of their breast health by making informed decisions in matters of early detection, prevention and life-styles choices.

### PROGRAM BENEFITS

- **Credible** – Deploys information from the American Cancer Society and CDC in a confidential, direct one on one setting using personalized health education kiosks and the Web. Approved by the University of Kentucky IRB.
- **Simple** – Clearly presents basic, life-saving information on mammograms, clinical breast examinations, nutrition, responsible diet and exercise in an easy to understand format using highly engaging images, graphics and audio narrations.
- **Captivating** – Gives users the ability to see the first-person benefits of making proper prevention, early detection and life-style choices. Can connect users directly to local resources.
- **Effective** – Independently developed assessment tools show that the program is extensively used and also influences users to favorably alter their behavior.
- **Outcome Based** - Offers program administrators the ability to retrieve full usage statistics detailing topics viewed (frequency), self-assessment tools (optional) and personal information (optional) directly from the web meeting HIPAA standards.

*Wellness Suite* offers a community of health education programs to our clients. These programs support flexible deployment strategies by using reliable, self-standing, easy to use touchscreen kiosks and web portals. For more information on how the *Wellness Suite* community can help your organization reach your targets and influence health outcomes contact St. Andrew Development today on the web at [www.StAndrew.com](http://www.StAndrew.com), email at [Wellness@StAndrew.com](mailto:Wellness@StAndrew.com), or call 717-848-5818.

# Wellness Suite <sup>SM</sup> Community of Health Education Touchscreen Kiosk & Web Programs



## Kiosk

**Main Entry:** ki-*osk*

**Pronunciation:** \ˈkē-ˈ*ä*sk\

**Function:** *noun*

**Etymology:** Turkish *köşk*, from Persian *kūshk* portico

**Date:** 1625

- 1 : an open summerhouse or pavilion
- 2 : a small structure with one or more open sides that is used to vend merchandise (as newspapers) or services (as film developing)
- 3 : a small stand-alone device providing information and services on a computer screen

At St. Andrew Development our kiosks are living & breathing, learning intervention tools helping make people's lives healthier, safer and better.

- To learn more contact us today at
- On the web - [www.StAndrew.com](http://www.StAndrew.com)
  - Email - [Wellness@StAndrew.com](mailto:Wellness@StAndrew.com)
  - Call (717) 848-5818